

# How can I provide medication-assisted treatment to patients in opioid withdrawal?

Shepard Health's proprietary software, **FIXXER™** is a real-time Care Process Management (CPM) platform that enables healthcare facilities to standardize the highest quality of care at the lowest price, monitor the compliance with best practices in real-time, and escalate deviations before errors occur.



**Problem:** Managing patients with opioid withdrawal is challenging for many providers outside the substance use disorder (SUD) specialty. Many providers have completed training to prescribe buprenorphine, but few are actively seeing and treating patients with an opioid dependence diagnosis. Recent surveys indicate providers' concerns including lack of specialty backup for complex problems and reimbursement concerns.

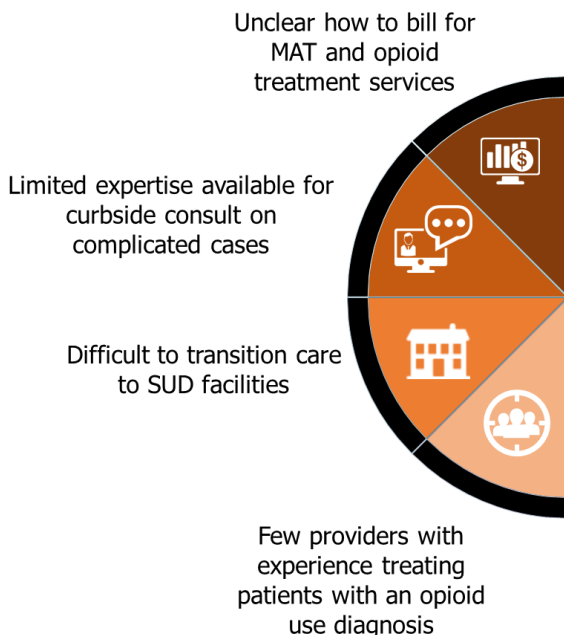


**Outcome:** Shepard Health's **FIXXER™** helps providers feel confident in the treatment pathways, provides access to specialists, and can clearly define revenue expectation. They are more likely to engage OUD patients and provide appropriate and clinically proven treatments. Providers indicate they are 50% more likely to work with opioid patients if they have a playbook and support from specialists.

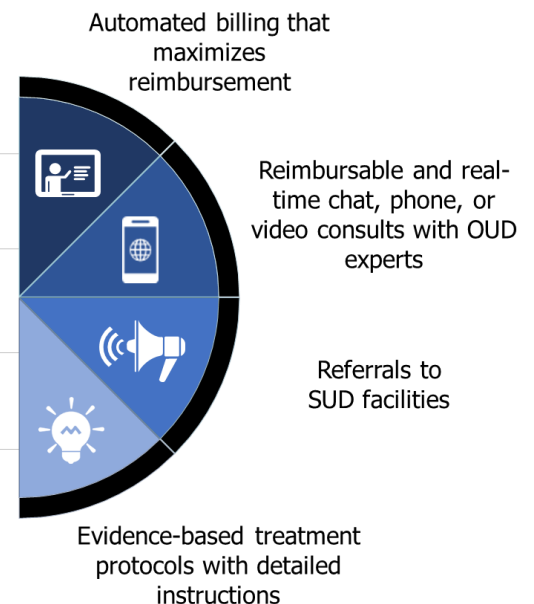


**Solution:** **FIXXER™** provides evidence-based MAT treatment guidelines, automated billing, real-time curbside consults available from OUD experts, and transition plans for patients. enabling healthcare providers confidence' in assessing and treating patients OUD. With **FIXXER™**, healthcare providers can quickly assess and confidently treat patients with OUD.

## Barriers to Providing Access to OUD Treatment



## FIXXER's Solution to Increasing Access to OUD Treatment



For more information contact: [Info@ShepardHealth.com](mailto:Info@ShepardHealth.com)

[www.ShepardHealth.com](http://www.ShepardHealth.com)